

ASTRO™

**THE LIGHTWEIGHT
INDUSTRY BENCHMARK
FOR ABRASIVE BLASTING**



ASTRO™



THE LIGHTWEIGHT INDUSTRY BENCHMARK FOR ABRASIVE BLASTING

The undisputed economical champion for an abrasive blasting helmet. The RPB® Astro™ meets safety standards worldwide, including Australia, Europe and the USA.

Weighing only 2.6lb/1.2kg (excluding the breathing tube), the Astro™'s revolutionary lightweight design has proven to reduce operator fatigue and downtime.

For users in search of a flat lens respirator, the Astro™'s best-in-class cape attachment and low lifetime maintenance and parts replacement costs offer users and businesses an unbeatable value and return on investment.

And unlike other flat lens respirator manufacturers, at RPB® Safety, we don't take shortcuts and we refuse to compromise on quality. Our rigorous production standards ensure a robust build and quality from shell to seams.

The Astro™ is certified to the standards below and conforms to AS/NZS 1716:2012.



AS/NZS
CONFORMS TO
AS/NZS 1716:2012
RESPIRATORY
PROTECTION

BOOST PRODUCTIVITY

Contractors have reported a time saving of over 45 minutes per day per blaster by using the RPB® "Fit & Save™" tear-off lenses that have individually pre-folded tabs, meaning workers are guaranteed to tear off only one lens at a time.



1-866-494-4599 | rpbsafety.com

ISO9001
CERTIFIED COMPANY

Abrasive-resistant polyethylene helmet shell.

Removable head suspension allows for easy cleaning.

Hand strap for easy transportation and storage.

Sturdy visor frame with molded hinge.

Large flat lens. Optional tear-off lenses.

Unique, high-strength visor strap.

Replaceable cape cover band.

Flexible breathing tube.



From local and globally sourced components.



ASTRO™ PACKAGES

ASTRO™ - PACKAGES | 19 | RESPIRATORS



ASTRO™
Breathing Tube (for Astro™)
Flow Control Valve
Nylon Respirator Cape
Part # 02-800



RESPIRATORS | 20 | ASTRO™ - PACKAGES

For more package options please visit rpb.com/astro
Other packages include:



ASTRO™ PARTS

Leather Respirator Cape
Part # 02-814



Nylon Respirator Cape
Part # 02-813



Cape Cover Band
Part # 02-812



Inner Bib
Part # NV2012



Visor Kit (includes Strap and Screws)
Part # 02-804



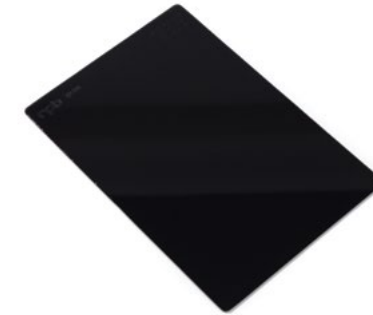
Visor Strap (pk 5)
Part # 02-805



Inner Lens (pk 10)
Part # 02-810



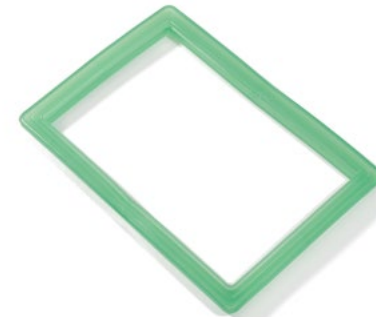
Tinted Inner Lens (pk 10)
Part # 02-810-T



Outer Lens (pk 50)
Part # 02-811-015



Window Gasket Seal
Part # 02-807



Tear-off Lens (pk 50)
Part # 02-816

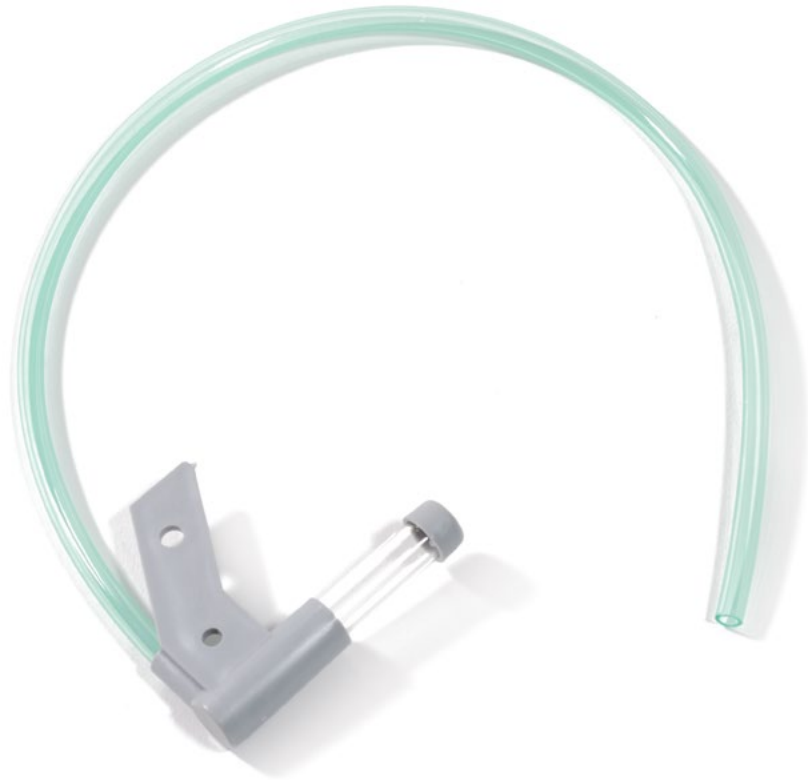


Air Inlet Assembly
Part # 03-035
(previously NV2006/7
and NV2006/7 CE)



ASTRO™ PARTS

Low Flow Indicator Assembly
Part # NV2030



Hand Strap
Part # NV2042



Head Harness (CE approved)
Part # 02-809CE



Cleat and Screws
Part # 02-806



Supplied Air Breathing Tube
(for Astro™)
Part # NV2021B
(previously NV2021)



Head Harness (NIOSH approved)
Part # 02-809



Suspension Clips (pk 4)
Part # 02-808



Domes (8 sets)
Part # NV2041



ASTRO™ - PARTS | RESPIRATORS

ASTRO™ - PARTS | RESPIRATORS