

# PosiTector® **UTG** Series

## Ultrasonic Thickness Gage

**TSI System**  
Mariánské nám. 1 61700 Brno Česko  
info@tsisystem.cz +420 545 129 462  
www.tsisystem.cz

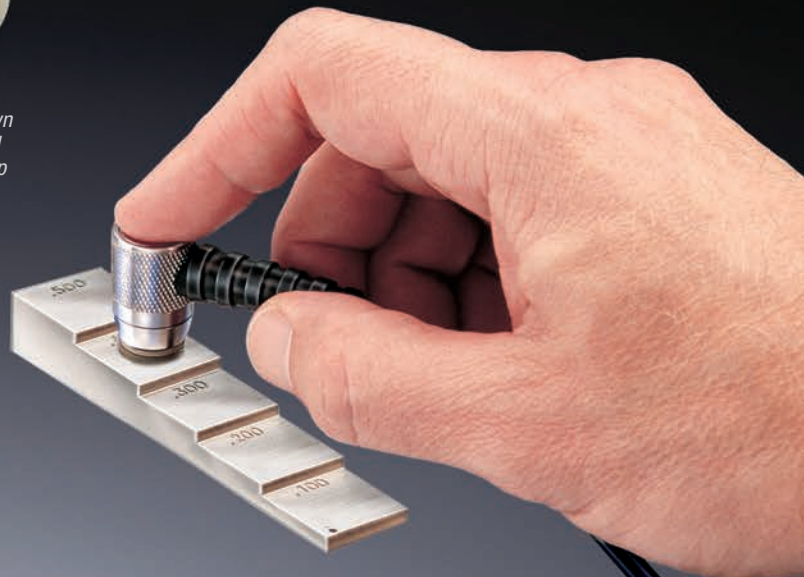
Measures the wall thickness of materials such as steel, plastic, and more



**UTG M Thru-Paint models** measure the metal thickness of a painted structure without having to remove the coating.



*UTG C shown with optional Certified Step Block*



Bluetooth®



Available on the App Store



**DeFelsko®**  
The Measure of Quality

# PosiTector® *UTG Series*

## All Gages Feature...

### Simple

- Pre-programmed velocities—simply select from a list of common materials or enter a custom value with ease
- SmartCouple™ mode eliminates unintentional decoupling—ensures continuous measurements on scaled or pitted surfaces—ideal for analyzing large areas using multiple passes
- **NEW** Larger 2.8" impact resistant color touchscreen with redesigned keypad for quick menu navigation
- **NEW** On-gage help explains menu items at the touch of a button
- RESET feature instantly restores factory settings

### Durable

- **NEW** Weatherproof, dustproof, and water-resistant—IP65-rated enclosure
- **NEW** Ergonomic design with durable rubberized grip
- Shock-absorbing protective rubber holster for added impact resistance
- Two year warranty on gage body AND probe

### Accurate

- Precision transducers provide fast, accurate readings
- Certificate of Calibration showing traceability to NIST included
- Built-in temperature compensation ensures measurement accuracy
- Conforms to national and international standards including ASTM E797

### Versatile

- PosiTector body accepts all PosiTector probes easily converting from an ultrasonic wall thickness gage to a coating thickness gage, surface profile gage, dew point meter, soluble salt tester, or hardness tester
- **NEW** Auto rotating display with Flip Lock

### Powerful

- Min Scan mode—take continuous readings and record min/max thicknesses—ideal for quick inspection over a large area
- Continually displays/updates average, standard deviation, min/max, and number of readings while measuring
- **NEW** Screen Capture—save 100 screen images for record keeping and review
- **NEW** Instant-on feature quickly powers up the gage if recently powered down
- **NEW** Up to 30% longer battery life
- USB port for fast, simple connection to a PC and to supply continuous power. USB cable included.
- PosiSoft USB Drive—stored readings and graphs can be accessed using universal PC/Mac web browsers or file explorers. No software required.
- Includes PosiSoft suite of software for viewing and reporting data

## PosiSoft® ...**FREE SOLUTIONS** for viewing, analyzing, and reporting data:



### PosiSoft Desktop

Powerful desktop software for downloading, viewing, printing, and storing measurement data. Includes customizable, templated PDF Report Generator. No internet connection required.

### Standard Models

**Includes ALL features as shown on left plus...**

- **NEW** Storage of 1,000 readings per probe—stored readings can be viewed or downloaded

### Advanced Models

**Includes ALL features as shown on left plus...**

- **NEW** Storage of 250,000 readings from multiple probes in up to 1,000 batches and sub-batches
- Live graphing of measurement data
- **NEW** Touchscreen keyboard for quickly renaming batches, adding notes, and more
- A-Scan with adjustable Gain and screen capture. PosiTector UTG M and UTG P probes include dual cursors to measure the distance between echoes
- B-Scan—displays a cross sectional profile of the test material
- WiFi technology wirelessly synchronizes with PosiSoft.net and downloads software updates
- **Bluetooth® 4.0 Technology** for data transfer to a mobile device running the PosiTector App or optional portable printer. **BLE API** available for integration into third-party software.
- Integrate with third-party software, drones, ROVs, PLCs, and robotic devices using several industry-standard communication protocols



A- Scan



B- Scan

For a complete comparison of the Standard and Advanced features visit [www.defelsko.com/UTG](http://www.defelsko.com/UTG)

### PosiSoft.net

A web-based application offering secure centralized management of readings. Includes customizable, templated PDF Report Generator. Access your data from any web-connected device.



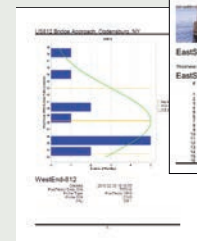
### PosiTector App

Mobile app connects PosiTector Advanced instruments, the PosiTector SmartLink and the PosiTest AT-A to your *iOS* or *Android* smart device.



### PosiSoft USB Drive

A simple gage interface to retrieve data in a manner similar to USB flash drives, cameras, or digital audio players. No software to install or internet connection required.





# Select from Six Models

## Corrosion Probes

Measures the wall thickness of materials such as steel, plastic, and more. Ideal for measuring the effects of corrosion or erosion on tanks, pipes, or any structure where access is limited to one side.



**UTG CA**  
for one-handed operation

### Cabled Probe – UTG C

- 5 MHz Dual Element transducer with cabled probe

### Integral Probe – UTG CA

- 5 MHz Dual Element transducer with integral probe
- Same specifications and operation as the popular UTG C but with a convenient integral configuration —ideal for one-handed operation

### Xtreme Probe – UTG CX

- 5 MHz Dual Element transducer with braided stainless steel cabled probe
- Durable cable and heavy-duty strain relief for demanding applications



### Low Frequency Probe – UTG CLF

- 2.25 MHz Dual Element transducer with cabled probe
- Designed for measuring attenuative materials such as cast iron
- Proprietary algorithm distinguishes back wall reflections from grain noise (reflections) found in cast materials



**UTG CLF**  
for cast materials

## Multiple Echo Probe

Features Thru-Paint capability to quickly and accurately measure the metal thickness of a painted structure without having to remove the coating. Also ideal for measuring blasted materials and other applications requiring a more durable wear face.

### Multiple Echo Probe – UTG M

- 5 MHz contact probe with wear resistant alumina probe tip and cabled probe
- Multiple-Echo technique averages 3 or more echoes for accurate and reliable readings
- Toggle between Single and Multiple-Echo modes
  - Multiple Echo mode eliminates coating thickness
  - Single Echo mode detects pits/flaws and increases measurement range

**UTG M1**  
Standard model  
in memory mode

## Precision Probe

Designed for high resolution measurements and thin materials including metals and plastics. Automatic Multi-Echo mode ensures the best accuracy on thin metals.

### Precision Probe – UTG P

- 15 MHz Single Element Delay Line with cabled probe
- Field replaceable transducer
- Auto Single or Multiple-Echo mode depending on material and thickness
- Automatic probe tip temperature compensation
- Ideal for thru-paint applications to quickly and accurately measure the metal thickness of a painted structure without having to remove the coating

**UTG P**  
for high resolution  
and thin materials



### Ultrasonic Wall Thickness Probes

Application	Corrosion		Corrosion Xtreme	Low Frequency	Multiple Echo		Precision	
Model	UTG C	UTG CA	UTG CX	UTG CLF	UTG M		UTG P	
Probe Type	5 MHz Dual Element			2.25 MHz Dual Element	5 MHz Contact		15 MHz Single Element Delay Line	
Mode	Single Echo			Single Echo	Multiple Echo	Steel	Plastic	
Measurement Range*	0.040" to 5.000" 1.00 to 125.00 mm			0.100" to 5.000" 2.50 to 125.00 mm	0.100" to 2.500" 2.50 to 60.00 mm	0.008" to 0.475" 0.2 to 12.0 mm	0.005" to 0.175" 0.125 to 4.500 mm	
Thru-Paint Capability	No			Yes				
Resolution	0.001" 0.01 mm			0.001" 0.01 mm		0.0001" 0.002 mm		
Accuracy	± 0.001" ± 0.03 mm			± 0.001" ± 0.03 mm		± 0.0004" ± 0.01 mm		

\* Measurement range is for carbon steel and depends upon surface condition, temperature, and material.

# Rugged Features...

Sealed USB Port for communicating with a PC or Mac

Weatherproof, dustproof, and shockproof



2.8" impact resistant color touchscreen display

Auto rotating display with Flip Lock and on-screen help

Ergonomic design with durable rubberized grip

Redesigned keypad for quick navigation

Sealed connector protects probe from water and dust intrusion



Advanced model shown with UTG C probe in B-Scan

Zero Plate

**All Gages Come Complete** with ultrasonic gel, protective rubber holster, wrist strap, 3 AAA alkaline batteries, instructions, protective lens shield, nylon carrying case with shoulder strap, Long Form Certificate of Calibration traceable to NIST, USB cable, PosiSoft Software, two (2) year warranty on body and probe.

**\*SIZE:** 127 x 66 x 25.4 mm (5" x 2.6" x 1") **\*WEIGHT:** 137 g (4.9 oz.) without batteries

\* Size and weight are for the PosiTector gage body only and do not include the probe.

Conforms to ASTM E797

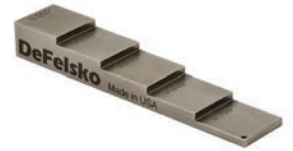


## Ordering Guide

Application	Corrosion		Corrosion Xtreme	Low Frequency	Multiple Echo	Precision
Probe Type	Cabled	Integral	Cabled			
Standard	UTG C1	UTG CA1	UTG CX1	UTG CLF1	UTG M1	UTG P1
Advanced	UTG C3	UTG CA3	UTG CX3	UTG CLF3	UTG M3	UTG P3
Probe Only	PRBUTGC	PRBUTGCA	PRBUTGCX	PRBUTGCLF	PRBUTGM	PRBUTGP

## Options

**Certified Step Blocks**—to fulfill both ISO and in-house quality control requirements. Available in Imperial and Metric.



**Ultrasonic Couplant**—glycol gel facilitates sound propagation through materials. Sold in packs of two or cases of twelve.

**Replacement Transducer**—field replaceable transducer for PosiTector UTG P only.

**Bluetooth™ Printer**—receives data from Advanced Models

**AC Power Kit**—for continuous operation —works in any country

**Replacement Zero Block**—for PosiTector UTG CA only

### PosiTector Probes

PosiTector bodies accept all PosiTector probes easily converting from an ultrasonic thickness gage to a coating thickness gage, surface profile gage, dew point meter, soluble salt tester, or hardness tester.



UTG C3 Advanced model with A-Scan