

**Z-LINK<sup>®</sup>**

**ELITE MULTI-PURPOSE  
RESPIRATORY PROTECTION**

**PPD<sup>®</sup>** ADVANCING  
YOUR SAFETY

**Z-LINK®**



## ELITE MULTI-PURPOSE RESPIRATORY PROTECTION

The RPB® Z-Link® is more than a product. It's a system. The most versatile multi-purpose respirator on the planet. From welding and grinding to chemical handling, the Z-Link® serves the widest spectrum of industries and applications on the market.

The Z-Link®'s large visor enables you to operate with a widened perspective. It features exceptional downward and peripheral vision combined with a visor that hinges open for free air breathing and easy communication. Engineered to advance your safety. Designed to increase your productivity.

Inspired by military innovation, our R&D Special Ops Unit has relentlessly refined every last detail. The team has traveled the world to meet with and listen to operators. Ultimately, these refinements have enabled RPB® users to work smarter, not harder. Save crucial energy, time and costs in competitive industry environments, where elite protective equipment is often overlooked.

The Z-Link® is certified to the standards below and conforms to AS/NZS 1716:2012, AS/NZS 13371:2010, AS/NZS 1801:1997.



**AS/NZS**  
CONFORMS TO  
AS/NZS 1716:2012  
RESPIRATORY  
PROTECTION

**ANSI Z89.1**  
EN397:2003 +A1:2009  
AS/NZS 1801:1997  
HARD HAT  
PROTECTION

**ANSI Z87+**  
EN166:2001  
AS/NZS 13371:2010  
HIGH VELOCITY IMPACT  
FOR EYE & FACE

### SUPERIOR COMFORT

The first padded multi-purpose respirator on the planet. A fully-adjustable Comfort-Link™ Fit System allowing for total control on helmet and head placement including the 360-degree adjustable head band and reversible brow pad.



1-866-494-4599 | [rpbsafety.com](http://rpbsafety.com)

**ISO9001**  
CERTIFIED COMPANY

Visor lifts open.

Reversible brow pad allows the choice of soft touch (smooth) or optimum comfort (fluffy) finish.

Air deflector for airflow adjustment.

Choice of 6 Anti-Fog and Scratch Resistant ANSI Z87+ visors: Premium Clear, Green Tint (Shade 3), Green Tint (Shade 5), Yellow Tint, Black Tint and Mirror Tint.

3 cape materials available: Tychem® 2000, Tychem® 4000 or Zytex® FR.

Fixed jaw ensures secure cape attachment.



Made in USA.\*

\*From local and globally sourced components.



Z-LINK® RESPIRATORS

Z-LINK® RESPIRATORS

# Z-LINK+®



## ELITE MULTI-PURPOSE RESPIRATORY PROTECTION

The RPB® Z-Link+® is the result of extensive user testing in demanding welding environments. Elite welding professionals benefit from reduced downtime and fatigue and increased productivity.

As the Z-Link+® clips directly onto your main visor, you can seamlessly weld with crystal-clear vision and the ability to lift up your visor to check welds and instantly begin grinding.

The Z-Link+® includes the large RPB® ADF lens with the 1.1.1.1. rating in optical quality. The all-important fourth "1", advanced angular dependence control, guarantees uniform shading and distortion-free vision, allowing you to work comfortably and effortlessly for hours across different angles.

In addition to the Z-Link® certifications, the Z-Link+® is certified to the standards below.

### ANSI Z87W

EN379:2003 +A1:2009  
EN175:1997 AS/NZS 1338.1:2012

WELDING EYE PROTECTION



### REMOVABLE WELDING VISOR

The Z-Link+® clips directly onto your main visor, enabling you to lift up your visor to check welds and to instantly begin grinding. For extended periods of grinding the visor is easily removed at the hinge points.

1-866-494-4599 | [rpbsafety.com](http://rpbsafety.com)

ISO9001  
CERTIFIED COMPANY



Replaceable impact lens and removable ADF lens.

Visor lifter to easily raise and lower the welding visor.

The Z-Link+® weld visor weighs only 1.87lb (0.85kg).

Large welding auto darkening filter with a 1.1.1.1. rating.

For extended periods of grinding the visor is easily removed at the hinge points.



Made in USA.\*

\*From local and globally sourced components.



Z-LINK+® | RESPIRATORS

Z-LINK+® | RESPIRATORS

# Z-LINK® PACKAGES

Z-LINK® - PACKAGES | RESPIRATORS



Z-LINK®  
C40™ Climate Control Device  
Supplied Air Breathing Tube (for Z-Link®)  
Tychem® 2000 Face Seal  
Part # 16-015-12



RESPIRATORS | Z-LINK® - PACKAGES

For more package options please visit [rpb.com/zlink](https://rpb.com/zlink)  
Other packages include:



# Z-LINK® PACKAGES

Z-LINK®  
 Z-Link+®  
 PX4 Air® PAPR  
 PX4 Air® Breathing Tube (for Z-Link®)  
 Zytec® FR Shoulder Cape  
**Part # 16-079-21-FR**



For more package options please visit [rpb.com/zlink](http://rpb.com/zlink)  
 Other packages include:

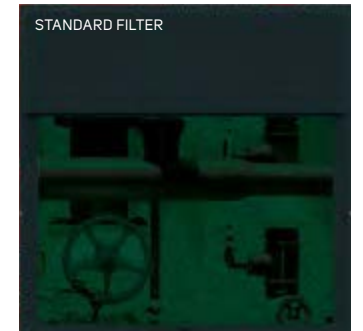
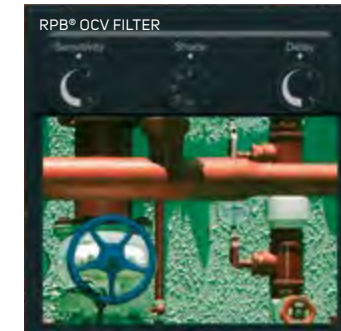


# Z-LINK® ADF LENS

## OPEN STATE

### RPB® OCV COLOR DEFINITION

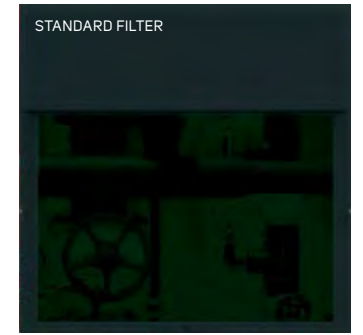
The OCV Filter range offers superior color definition in both the open and activated state, allowing the operator to clearly see LED displays on machines and equipment, as well as heat definition on the actual weld.



## CLOSED STATE

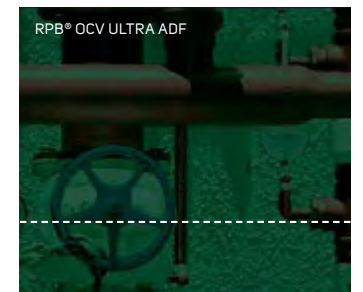
### RPB® OCV OPTICAL QUALITY

The OCV filter boasts a 1/1/1 optical quality rating which is the world's best. This means a clear view from a wider range of angles, reducing eye fatigue and increasing your productivity.



## 40% MORE VIEWING WITH THE RPB® OCV ULTRA ADF (110X110)

- Viewing Area: 10.1 square inches (3.78" x 2.68")
- Light state: Shade 4. Dark state: Selectable shades 9-13
- Fast, reliable switching speed: 0.15ms at 73°F / 23°C
- Adjustable delay from dark to light (0.2 to 0.8 seconds)
- Weight (ADF only): 5.64 oz / 160g.
- Temperature range: 14°F to 140°F / -10°C to +60°C
- 3 year warranty
- 2 Sensors: it is the quality not the quantity of sensors that provide the fast reaction time of the filter
- Sensitivity and delay adjustment on case
- Highest quality wide view ADF available
- Constant UV/IR protection
- Accommodates standard 4" x 5" front cover lens
- Adapts to standard magnifying lens
- Solar powered
- Best optical quality in industry - 1/1/1 DIN Rating
- Suitable for all types of electro-arc welding, including covered electrodes, MIG/MAG, TIG/WIG, plasma welding and cutting. NOT FOR LASER OR GAS WELDING.



Z-LINK® - PACKAGES | RESPIRATORS

Z-LINK® - ADF LENS | RESPIRATORS

# Z-LINK® PARTS

Comfort Pad  
Part # 16-522



Rear Cape Clip  
Part # 16-518



Earmuff Bracket  
(pair, includes screws)  
Part # 16-516



Impact Absorber  
Part # 16-521



Ratchet Assembly  
Part # 16-530



Brow Pad  
Part # 16-526



Head Harness (includes 16-530)  
Part # 16-531



Head Harness System  
Bracket and Air Deflector  
Part # 16-525



# Z-LINK® PARTS

Side Padding Frames  
Part # 16-527



Side Padding System  
Part # 16-520-S



Foam Side Pads  
Part # 16-528



FR Hose Cover  
(does not include Breathing Tube)  
Part # 04-854



Visor  
(includes 16-612, 16-613, 16-614,  
16-615, FS-04, FS-17)  
Part # 16-611



Lens Seal  
Part # 16-515



Jaw Assembly  
(includes screws and 16-515)  
Part # 16-514



Fit System  
(includes 16-520-S, 16-521, 16-522,  
16-525, 16-526, 16-530, 16-531)  
Part # 16-520-T



Z-Link Pivot Assembly  
(includes 16-614, 16-516, 2pcs 16-615,  
FS-04, 2pcs FS-17)  
Part # 16-616

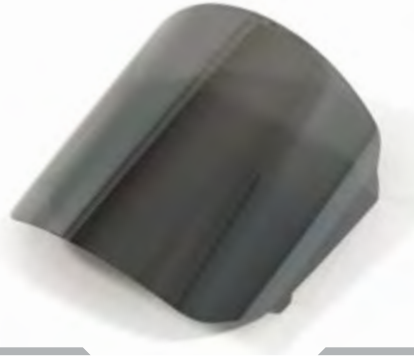


Z-LINK® - PARTS | RESPIRATORS

Z-LINK® - PARTS | RESPIRATORS

# Z-LINK® PARTS

Safety Lens - Mirror Tinted  
Anti Fog  
Part # 16-810-MT



Safety Lens  
Anti Fog/Anti Scratch  
Part # 16-810



Safety Lens - Smoke Tinted  
Anti Fog/Anti Scratch  
Part # 16-810-ST



Welding Lens Retainer  
Part # 16-672



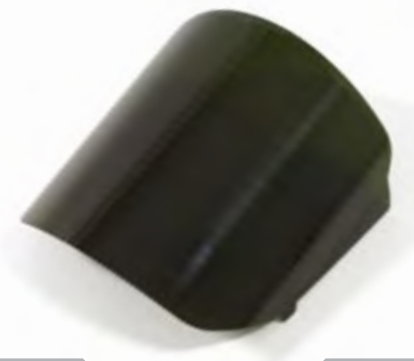
Welding Impact Lens (pk 10)  
Part # 16-872  
Z-Link® ADF Impact Lens - Aluminum Coated (pk 10)  
Part # 16-872-AL  
Z-Link® Protective Lens for ADF Impact Lens  
- Aluminum Coated (pk 10)  
Part # 16-874



Ultra Magnifying Lens  
(available in 1.0, 1.5, 2.0 and 2.5)  
Part # 13-072- (1, 1.5, 2 or 2.5)



Safety Lens - Infrared (shade 5)  
Part # 16-810-IR5



Safety Lens - Yellow Tinted  
Anti Fog/Anti Scratch  
Part # 16-810-YT



Tear-off Lens (pk 50)  
Part # 16-811



PX4 Air® Breathing Tube (for Z-Link®)  
Part # 04-835



Supplied Air Breathing Tube  
(for Z-Link®)  
Part # 04-830



Magnifying Lens Holder  
Part # 16-875



Z-LINK® - PARTS | RESPIRATORS

Z-LINK® - PARTS | RESPIRATORS



# Z-LINK® PARTS

ADF Rear Lens (pk 10)  
Part # 16-873



Weld Visor Attachment Clips  
Part # 16-673



Welding Visor  
(includes 16-672, 16-673, 16-674)  
Part # 16-671



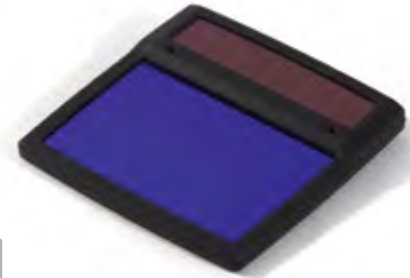
Zytec® FR Face Seal  
Part # 16-711



Tychem® 4000 Shoulder Cape  
Part # 16-723



ADF Lens  
Part # 16-871



Welding Visor Frame  
Part # 16-674



Zytec® FR Shoulder Cape  
Part # 16-721



Welding Visor (includes ADF Lens)  
Part # 16-670



Tychem® 2000 Face Seal  
Part # 16-712



Low Flow Indicator  
Part # 16-930

